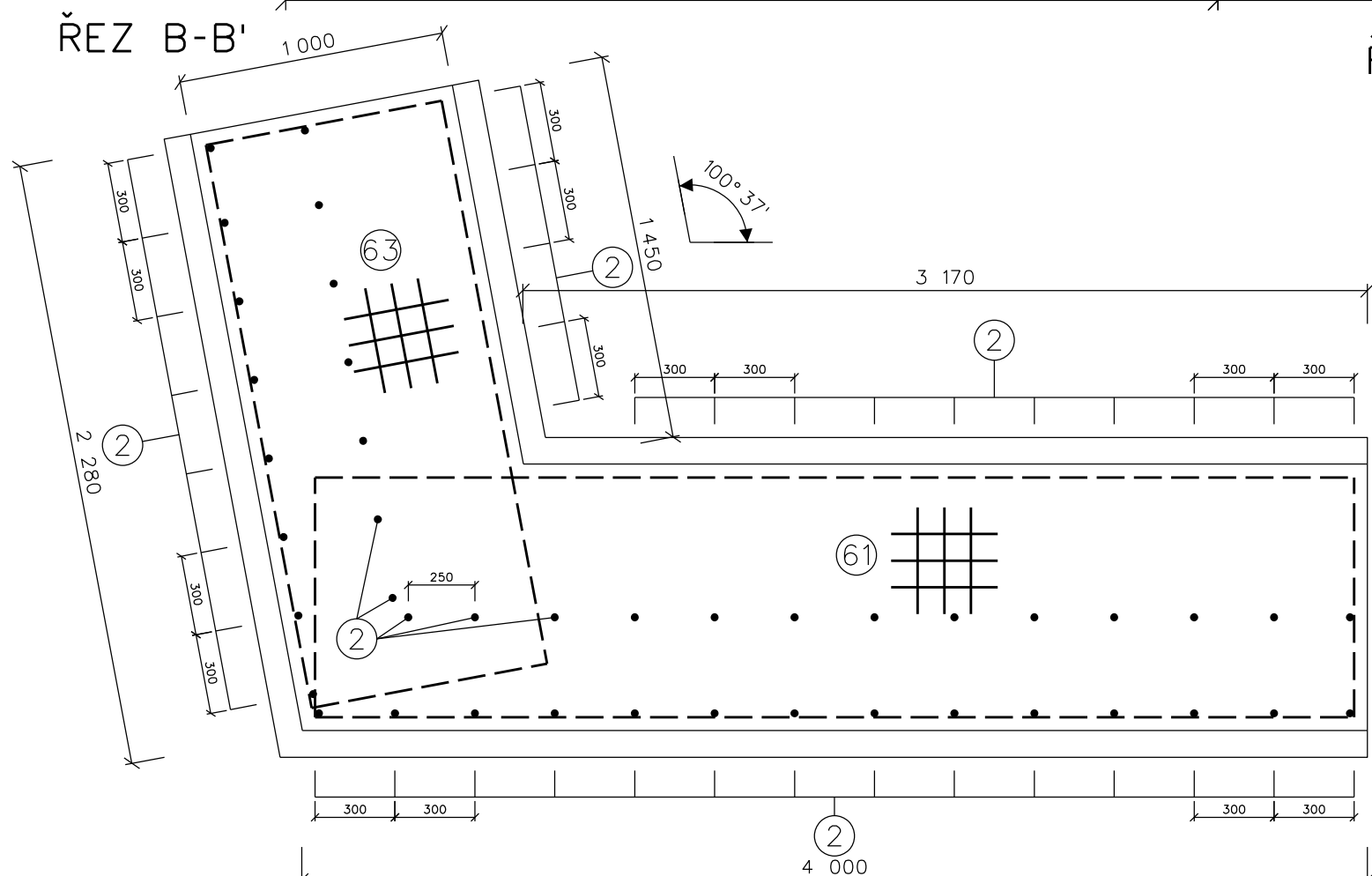
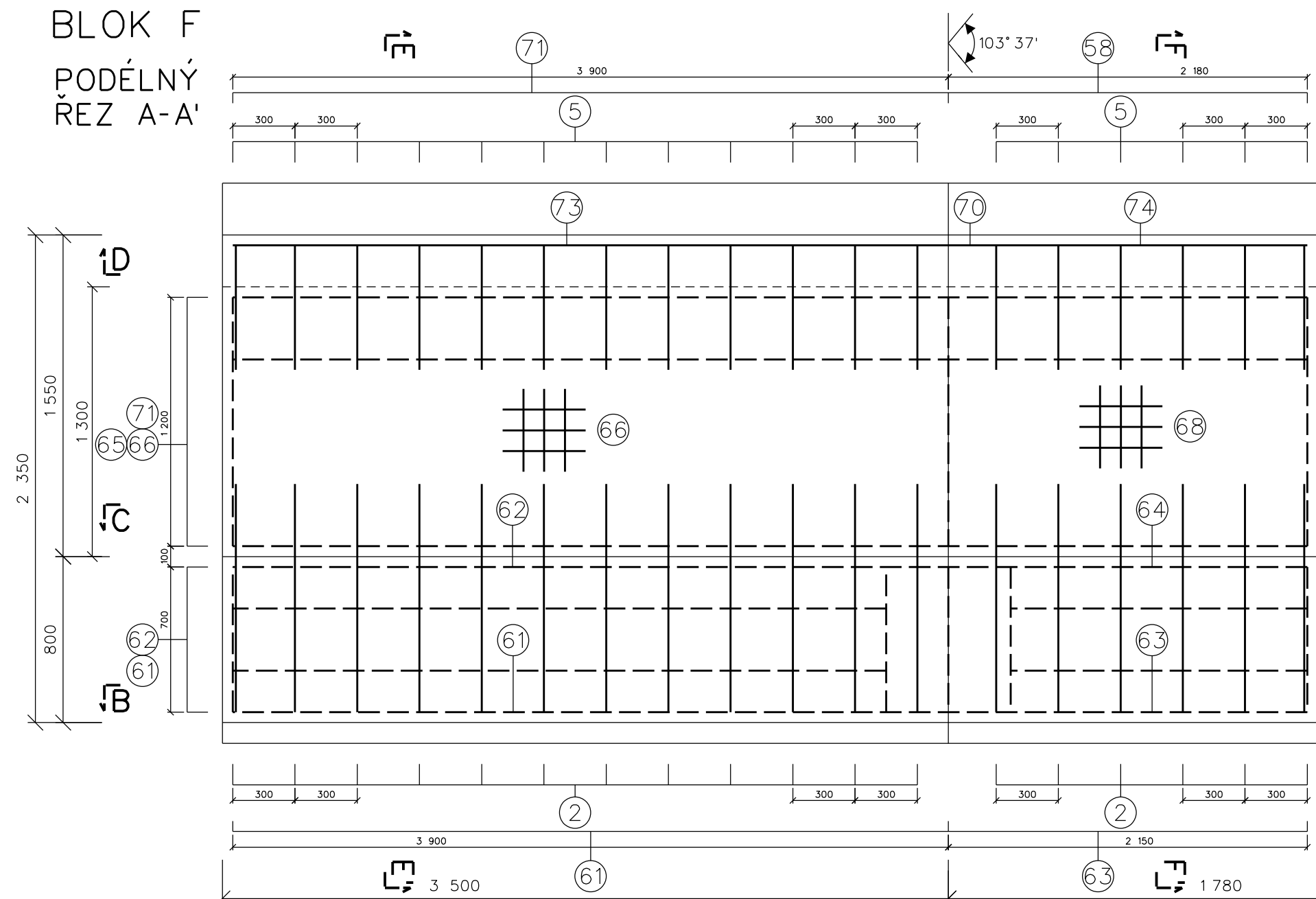
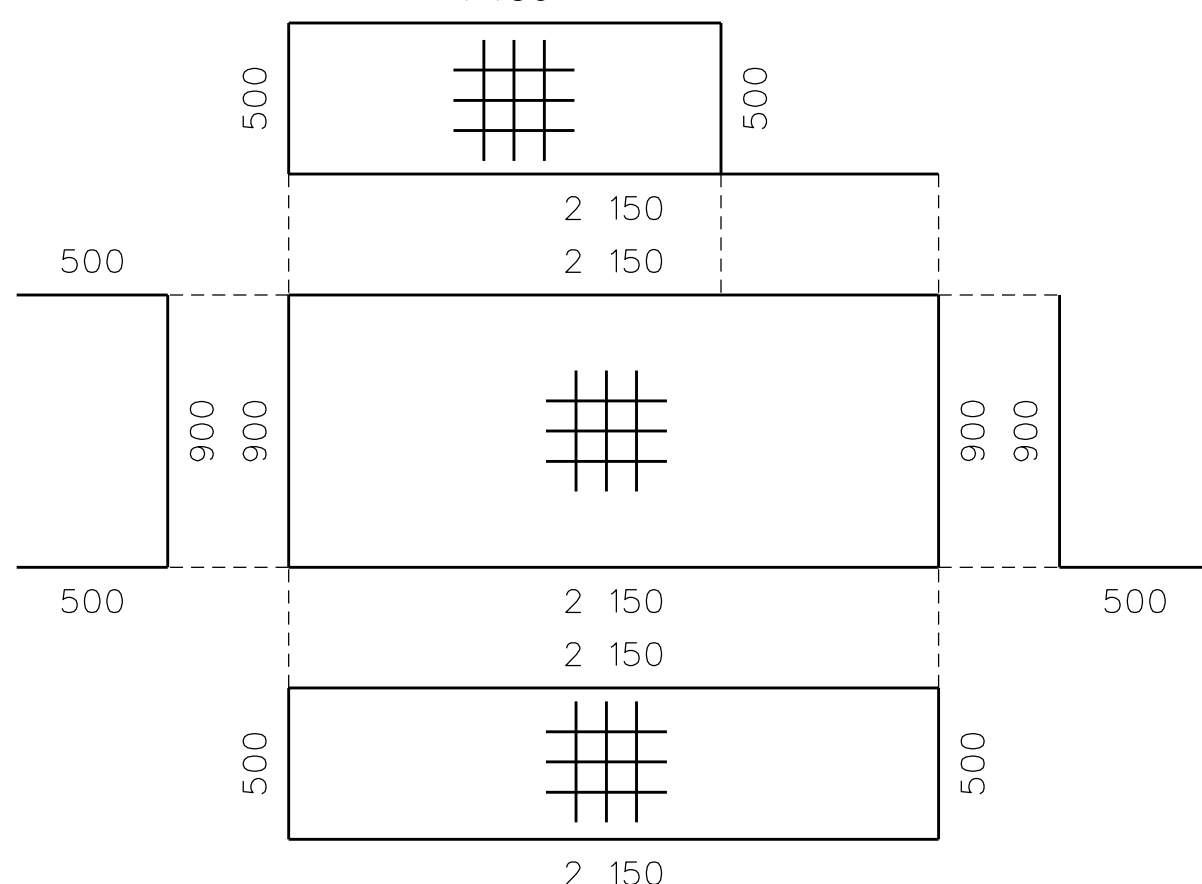


BLOK F

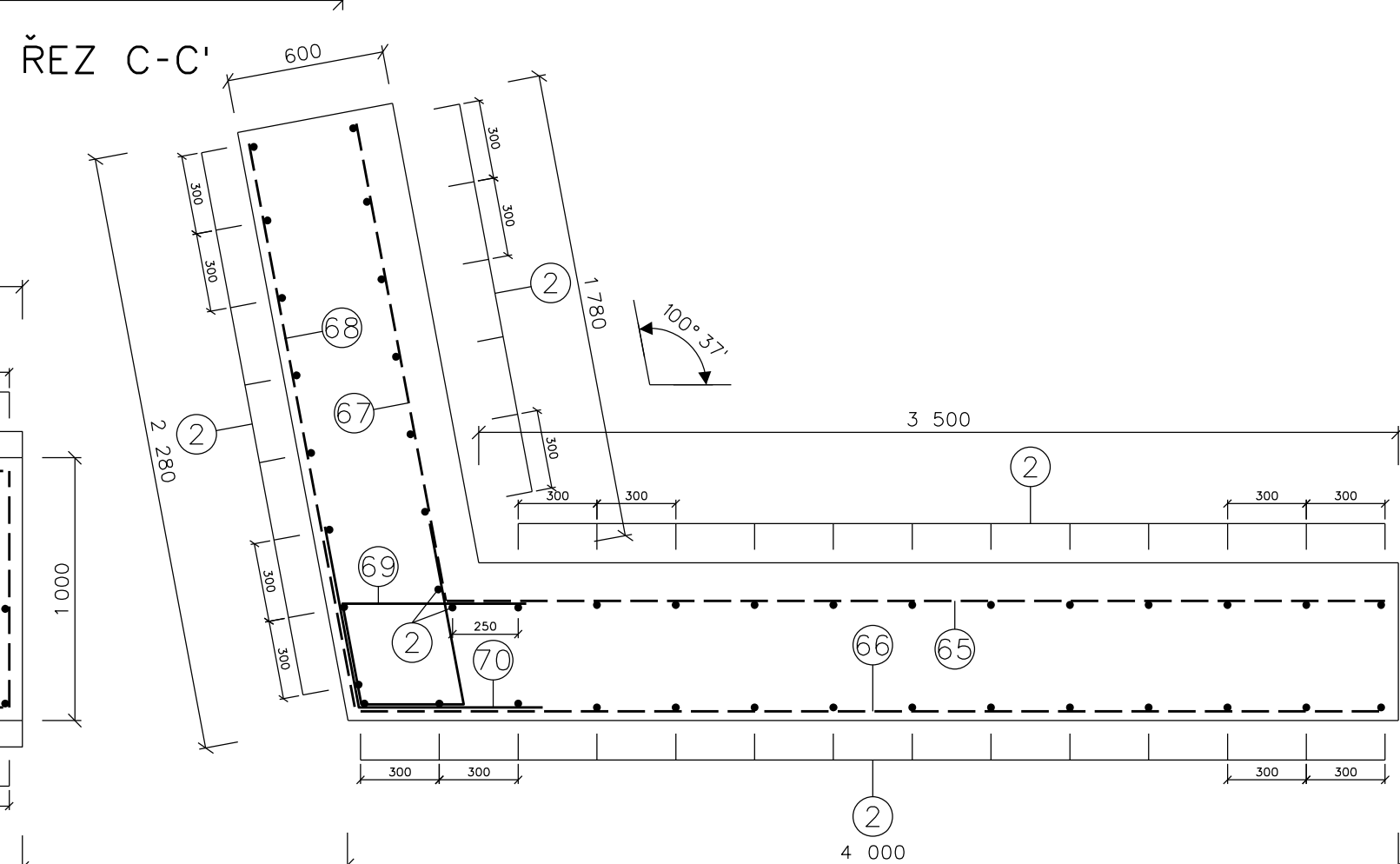
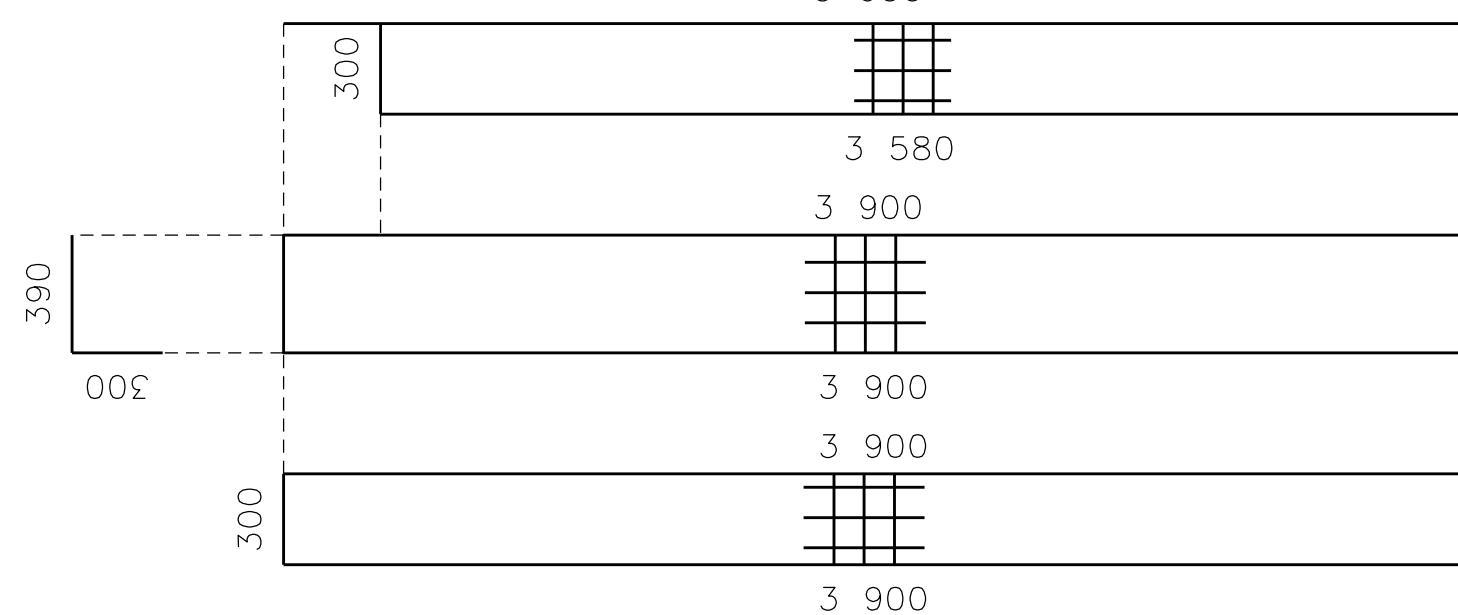
PODÉLNÝ
ŘEZ A-A'



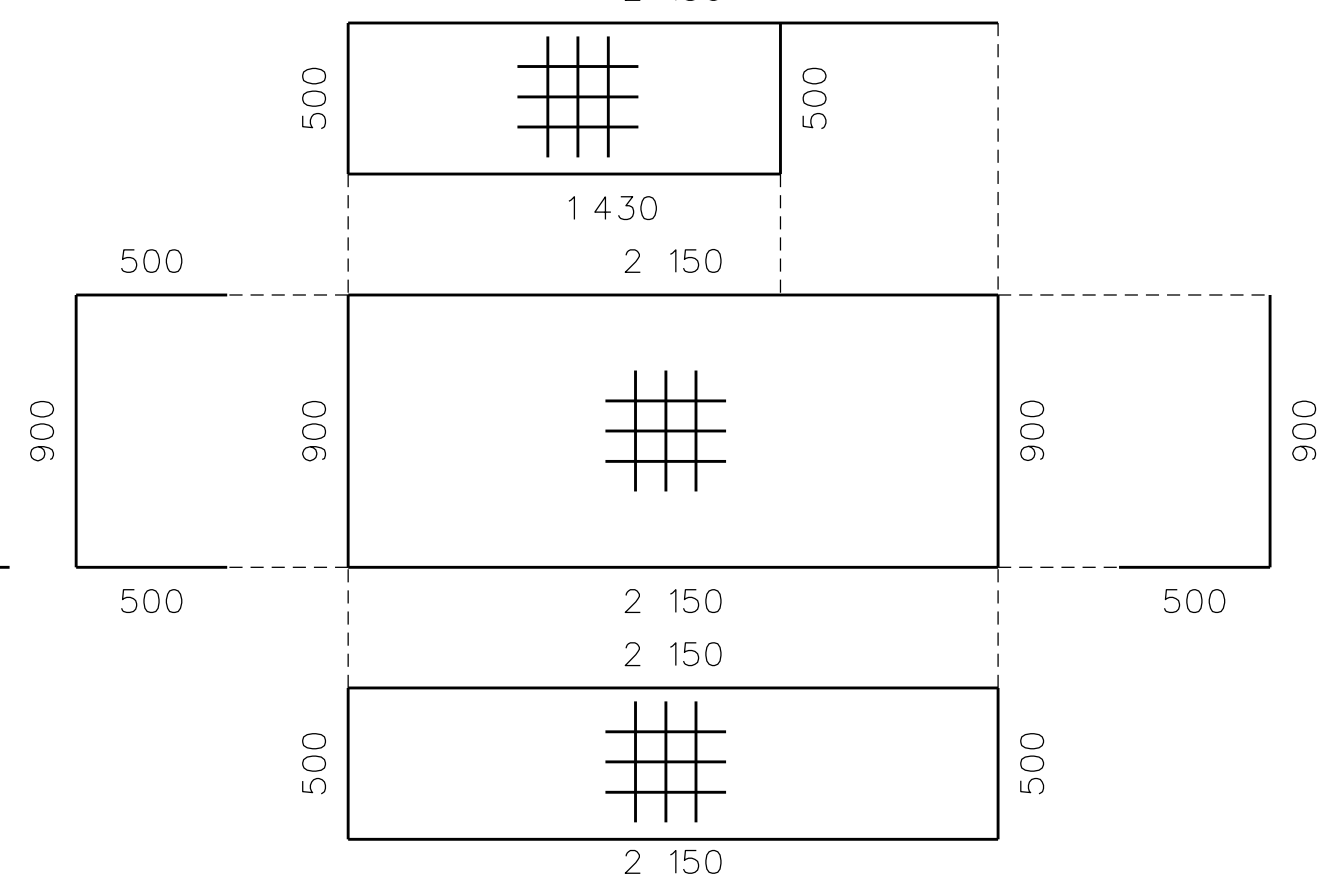
63 KARI SÍT 100x100x8 mm, 3,73 m² (1900x2150 mm)
celkem 1 ks 1 430



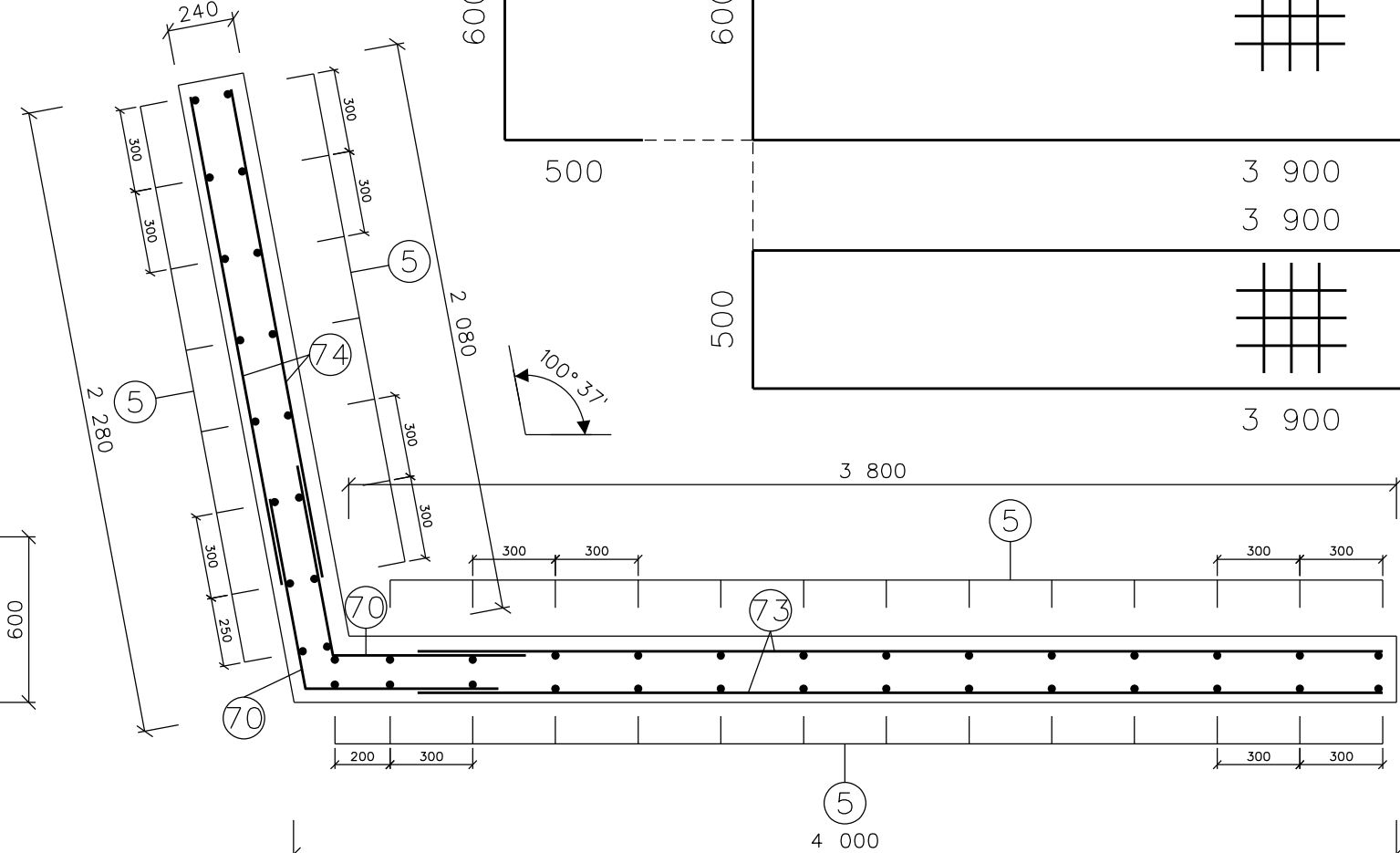
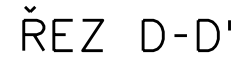
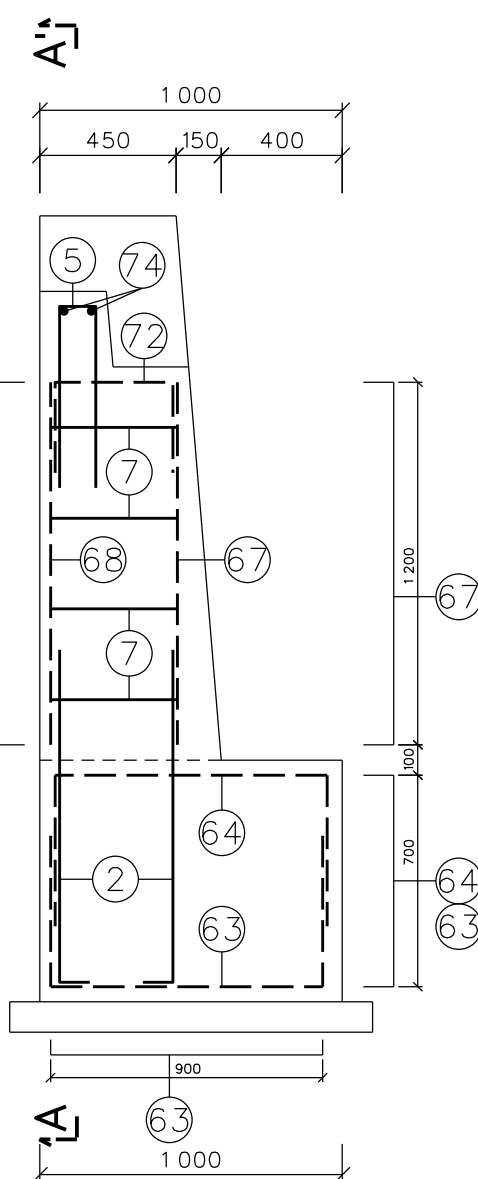
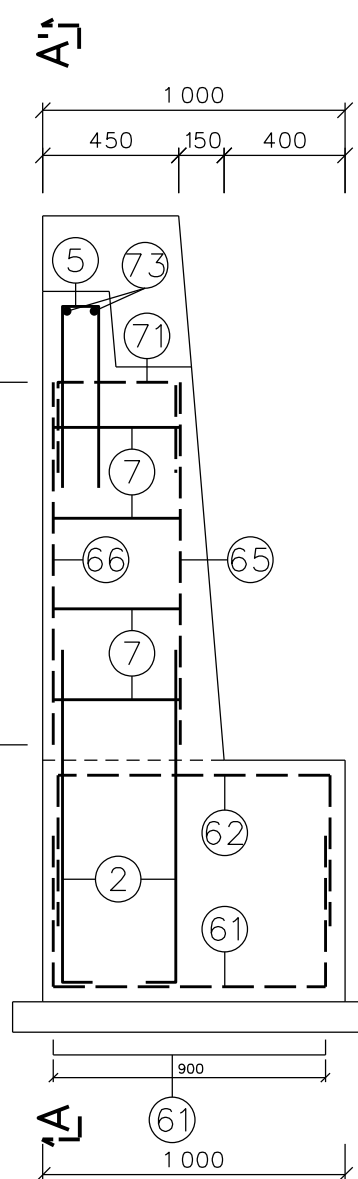
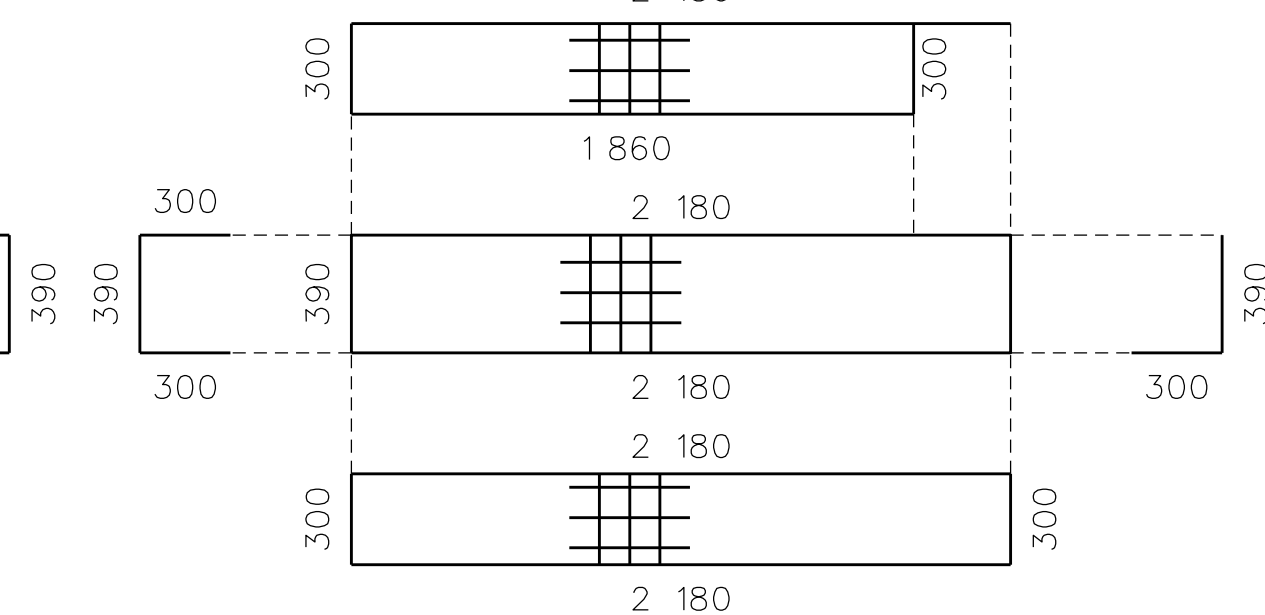
71 KARI SÍŤ 100x100x8 mm, 3,77 m² (990x3900 mm)
celkem 1 ks 3 900



64 KARI ŠÍŤ 100x100x8 mm, 3,73 m² (1900x2150 mm)
celkem 1 ks 2 150



72) KARI SÍŤ 100x100x8 mm, 2,06 m² (990x2180 mm)
celkem 1 ks 2 180



⑤ Ø12 - 1320 mm, \bar{a} 300 mm
celkem 22 ks

② Ø12 - 1200 mm,
a 300 mm
celkem 42 ks

⑦ Ø8 - 490 mm 6ks/m2
celkem 40 ks

65) KARI SÍŤ 100x100x8 mm, 4,30 m² (1200x3580 mm)
celkem 1 ks

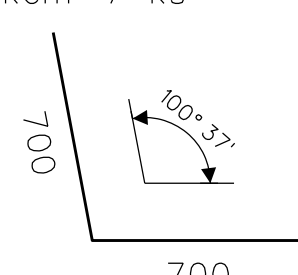
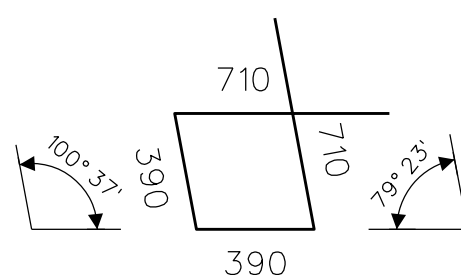
⑥⑥ KARI SÍŤ 100x100x8 mm, 4,68 m² (1200x3900 mm)
celkem 1 ks

67) KARI SÍŤ 100x100x8 mm, 2,23 m² (1200x1860 mm)
celkem 1 ks

68) KARI SÍŤ 100x100x8 mm, 2,62 m² (1200x2180 mm)
celkem 1 ks

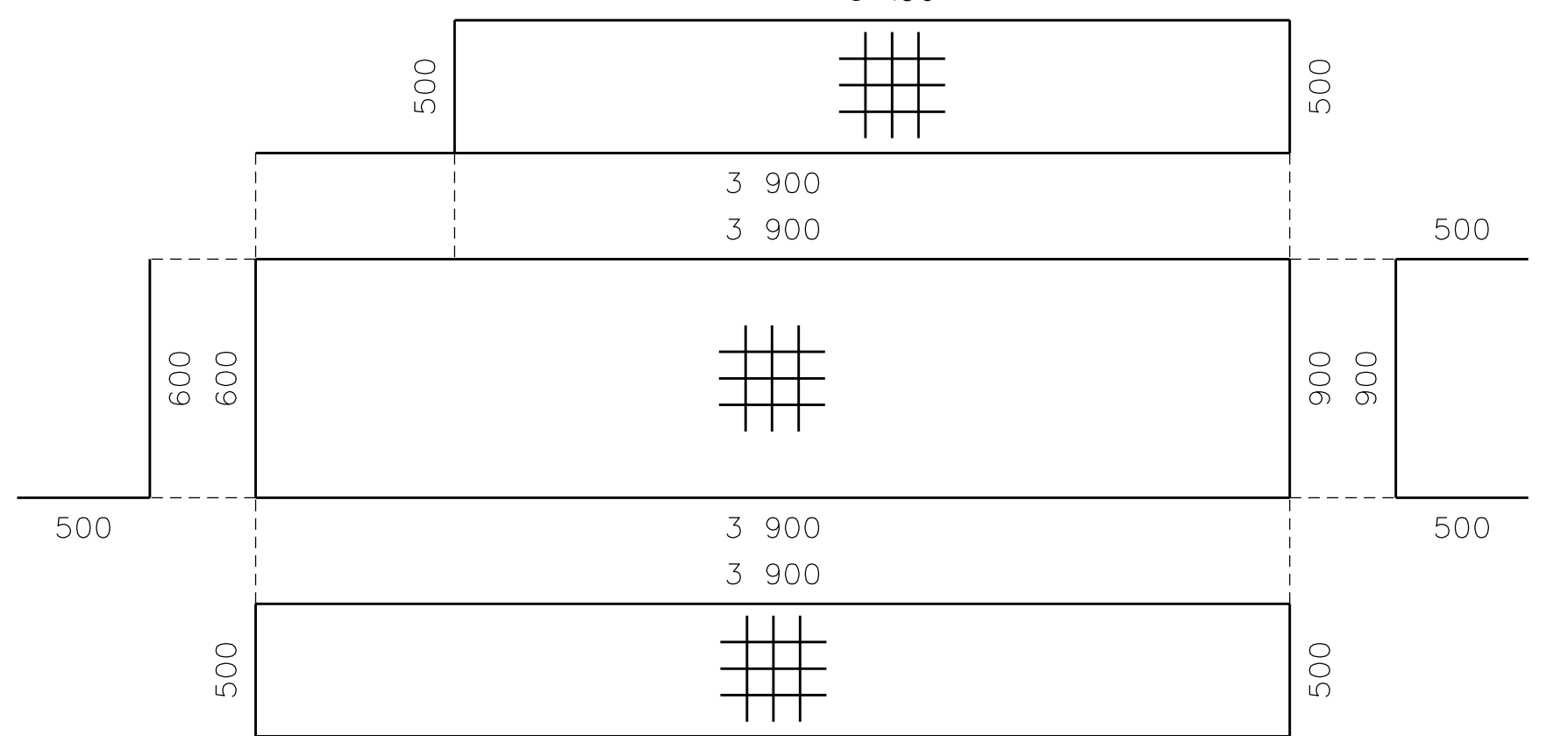
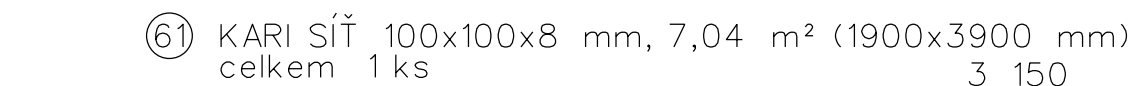
⑥9 Ø12 - 2200 mm, \bar{a} 300 mm
celkem 5 ks

70 Ø12 - 1400 mm, a 300 mm
celkem 7 ks

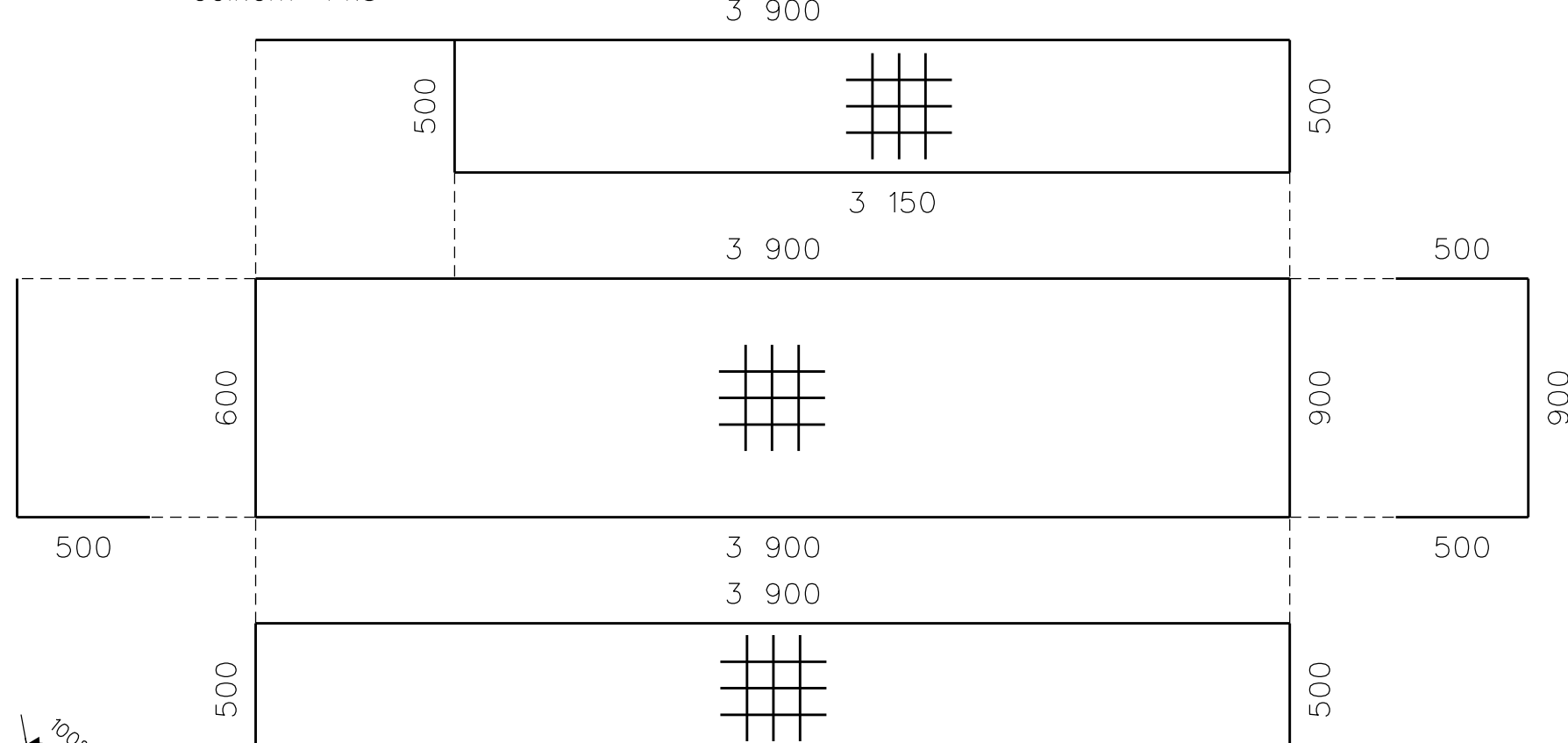


73 Ø12 - 3500 mm
celkem 2 ks

74 Ø12 - 1800 mm
celkem 2 ks
1 800



62) KARI SÍŤ 100x100x8 mm, 7,04 m² (1900x3900 mm)
celkem 1 ks



⑤ Ø12 - 1320 mm, \bar{a} 300 mm
celkem 22 ks

⑦ Ø8 - 490 mm 6ks/m2
celkem 40 ks

VÝKAZ VÝZTUŽE

BLOK	OZN.	PRŮMĚR VYUŽITĚ	DĚLKA	PLOCHA	KS NA 1 BLOK	POČET BLOKŮ	DĚLKA CELKEM, PLOCHA CELKEM		
							B500B		KARI
							8	12	100x100x8
F	2	12	1200		42	1		50,40	
	5	12	1320		22			29,04	
	7	8	490		40		19,60		
	61	100x100x8		7,04	1				7,04
	62	100x100x8		7,04	1				7,04
	63	100x100x8		3,73	1				3,73
	64	100x100x8		3,73	1				3,73
	65	100x100x8		4,30	1				4,30
	66	100x100x8		4,68	1				4,68
	67	100x100x8		2,23	1				2,23
	68	100x100x8		2,62	1				2,62
	69	12	2200		5			11,00	
	70	12	1400		7			9,80	
	71	100x100x8		3,77	1				3,77
	72	100x100x8		2,06	1				2,06
	73	12	3500		2			7,00	
74	12	1800		2		3,60			
DĚLKA CELKEM (m); PLOCHA CELKEM (m2)							19,60	110,84	41,20
HMOTNOST (kg/m); (kg/m2)							0,400	0,890	7,900
HMOTNOST (kg)							7,84	98,65	325,48
HMOTNOST CELKEM (kg)							431,97		

PŘEDPOKLÁDANÝ ROZMĚR KARI SÍTÍ NA JEDEN BLOK F

- 1ks 8/10/2,15x5m (KY 81)

- 3ks 8/10/2,4x6m (AQ 80

PŘELOŽENÍ SÍŤOVINY min. 300mm

KRYTÍ VÝZTUŽE 50mm